



JCRC Flight Line

2022 Volume II, February 2022

CLUB OFFICERS 2022

President

David Jones
(423) 416-9047

Vice President

Phil Swihart
(321) 514-3247

Treasurer

Anthony Hall
(423) 915-9468

Secretary

Eric (Nick) Nicodemus
(423) 946-2525

Safety Officer

Terry Baily
(423) 282-0485

Field Marshals

Skip Weller (423) 946-3840
Anthony Blair (662) 699-9768
Craig Quillen (423) 384-4621
Keith Nelson (423) 491-2139

Newsletter Editor

Johnny Judd
(423) 426-1684

Webmaster

Craig Quillen
(423) 384-4621

Event Coordinator

Glenn Ross
(423) 282-1197

Board Members

	Term
Anthony Hall –	2017 – 2022
Vic Koenig –	2020 – 2023
Skip Weller –	2019 – 2024
Jerry Black –	2020 – 2025
Craig Quillen –	2021 – 2026
Tim Edwards –	2022 – 2027

Editor's Notes

My wife and I contracted Covid 19 this month. We are on the mend now. Thanks to all who reached out with positive thoughts and well wishes. And thanks to Dave, Phil, Vic, and Glenn for sending me pictures and notes for the newsletter.

I'm trying out a little different navigation format. You can still scroll the length of the document, or you can "click" to the sections in the menu. Let me know what you think.

By-Laws Proposal:

The Board of Directors feels there should be some written guidance on the use of JCRC resources and has requested an appendix be added to the By-Laws to provide that guidance.

At the January Officers' meeting it was requested that an appendix be developed and submitted as a revision to the current By-Laws. Follow this link to the proposed [Appendix E, Proper use and care of Club Resources](#).

This is being provided both on the web site and here to allow members to review and be prepared to discuss and then to vote on this proposed amendment at the March Membership meeting."

Follow the hyperlink to read the proposed document, then click the "Back to Menu" link to return here.

Menu

[Club Activities](#)

[Field Information](#)

[Member Information](#)

[From the Workbench](#)

[Wing Tips](#)

[For Sale](#)

[Upcoming Events](#)

[Upcoming at a Glance](#)

[Sponsors](#)

[By-Laws Proposals](#)

Next Meeting

**Tuesday, 29 March 2022, 6:45 PM at the Liberty Church Fellowship Hall,
844 Liberty Church Road, Kingsport, Tennessee 37663.**

Club Activities –

First Indoor Fun-Fly of 2022 – Saturday February 12, at Kingsport Civic Auditorium

The folks in uniform are the Civil Air Patrol who set up their displays in the lobby. We had 9 Club fliers and I think, three non club adult flyers and two non club kids flying Quad Copters (mini drones) with about 25 total people there most of the day and maybe ten visitors throughout the afternoon.

WCYB Channel 5 covered the event and you can see the short film at the link below. Ron Browe gives a nice interview. The little red and white plane and thumbs are Dave's:

<https://wcyb.com/news/local/indoor-fun-fly-held-in-kingsport>

Glenn is seen launching an Aero Commander Shrike. I asked him, wasn't there a famous air show performer who flew one. He told me the guy was Bob Hoover. A Tennessean about whom Chuck Yeager said was "the best pilot who ever lived". He flew a Spitfire during WW II, was shot down and captured and put in a POW camp. He escaped, found a Luftwaffe airfield, stole an FW 190 and escaped, flying along the coast line to Holland to reach friendly lines. Pretty Good Ole Boy!!





The next indoor event is scheduled for March 12 at the same location. It's on my calendar.

[Back to Menu](#)

Field Information -

The New Shelter continues to improve! –



A crew showed up on Monday Feb 7 to relocate the chain-link fence. The fence was relocated from the center of the new shelter to the parking side of the shelter. The crew worked diligently without harm to themselves. Many thanks to Dave, Skip, Glenn, Shaun, Alan, and Phil for their efforts in keeping the best airfield even better.



We inherited some run-up tables from the Asheville club. Glenn Ross took one home and did a complete renovation. Thanks Glenn.



NO ENGINE OR MOTOR RUN THIS SIDE OF FENCE

[Back to Menu](#)

Member Information—

NEW MEMBERS: Welcome Brady Doss and Doyle Blevins. Looking forward to seeing you at the field.

Meeting –

19 Members present and 2 guests (Travis Hutchinson and his father from CAP}

David introduced guests and asked if they would address the membership. Travis spoke to the club about being pleased to attend our indoor fun fly in Feb. He also gave David a certificate of Appreciation for contributing to benefit the community with our outreach. He then gave us the opportunity to use one of their quad copters for a fun fly event or a learn to fly event. He then announced that he would be joining our club that evening.

Sadly, David reported one member (Teresa's husband John) and one member (Keith Nelson) wife Gloria passed away last month.

Also, Anthony reported the passing of former member Bill Ramey. Bill acquired many planes and radios which his family has asked that all items be auctioned off at our May Fun Fly. All proceeds will go to Bill's family to offset debt from his passing.

Here are 3 pictures from Bill's collection. I'll post more information about the sale on the Facebook page and in the newsletter next month:



Before adjourning David introduced a new prospective member who came in after the meeting started. His name is Ron Richardson. Welcome to our club, Ron.

[Back to Menu](#)

From the Workbench—

I received this report from Michael Harrison about the scale projects he is working on:

“Johnny,

I completed a SIG 1/5 scale J-3 Cub several months ago. Earlier I submitted a few pictures during the construction phase. The kit was laser cut. It was a pleasure to work with. The markings are vinyl and came with the kit.

Wingspan: 84.5 "

Length: 55.25 "

Covering: Oratex

Scale landing gear by Robart”



"I am currently working on a Balsa USA Sopwith Camel. The top and bottom wings are represented in the photo.

Wingspan: 84"

Length: 55"

Covering will be Oratex

The engine is a Zenoah G26 with magneto ignition

The kit is laser cut, again a pleasure to work with versus the die cut kits.

Note the similar dimensions between the 1/5 scale Cub and the 1/4 scale camel.

Mike"



Beautiful work, Michael. Thanks for sharing the info and pictures. I know the members will enjoy seeing your fine craftsmanship and look forward to seeing those planes at the field. Maybe you could drop me a note when you are going to fly. I'd like to see that and take a few pictures.

Senior Pattern

Vic and Phil are building new senior pattern airplanes. I look forward to seeing their progress. I was scheduled to see Vic's work and talk with him before I came down sick. I hope to get to it this month.

Share some pictures - What's on your bench?

[Back to Menu](#)

Wing Tips—

I'm finishing up a .60 size Spacewalker and the wing loading is higher than I expected, with a weight of 7 pounds, plus or minus. I'd like to use a 5s 2200 mAh instead of a 5s 4000 mAh which weighs almost twice as much. I'd like to know how much flight time I can expect from each battery. During an internet search, I found the following article. It had a couple of math and grammar errors, but I found it quite helpful. I changed the quick reference examples to reflect my actual battery choices. Test runs on my power meter indicated that my motor/prop combo would pull 42 amps, producing 725 watts, and 7.5 lbs of thrust on the spring scale. I'm guessing it will average 20 amps in flight.

HOW TO ESTIMATE THE FLIGHT TIME OF A BATTERY

by [FliteTest](#) | December 5, 2018 | (10) Posted in [HOW TO](#)

Here's all the info you need to calculate how long your planes can fly for!

Do you want to fly safely in the knowledge that you won't run out of fuel? Well, you can take the time to estimate your flight times. Before you do this, however, you'll need to know about the three components of the calculation: **Battery Capacity, Battery Discharge, and Average Amp Draw.**

Battery Capacity

For the calculation to work, you have to translate your battery's capacity (usually in milliampere-hours) into amp-hours. To convert milliampere-hours to amp-hours (mAh to Ah), take your battery capacity and divide it by 1000.

Example: $2200\text{mAh}/1000 = 2.2\text{Ah}$.

Battery Discharge

As we all know, you can't fly with a LiPo battery until it is completely flat. This is because there is a limit on how many amp-hours you can discharge before the battery isn't able to be recharged. What this means is that the effective capacity of a LiPo is only 80% of your total amp-hours. To work out 80% of your battery discharge, simply multiply your battery capacity in Ah by 0.8.

Example: $2.2\text{Ah} \times 0.8 = 1.76\text{A}$ effective capacity.

Average Amp Draw

The final component of the calculation requires you to know the average amp draw of your aircraft on a flight. You can find out how much your motor draws (or multiple motors draw) by using a **measuring tool** during a bench test. If you don't have one of these, you can get an indication of how many amps you'll draw from the **spec sheet** of your motor.

The Formula

Flight time = (Battery Capacity x Battery Discharge / Average Amp Draw) x60

Quick process:

1. Take your battery capacity in amp-hours and multiply by battery discharge in amps.
2. Divide by your average amp draw in amps.
3. Multiply by 60 to give you your total in minutes.

It's as simple as that.

Quick Reference Examples

Flite Test Power Pack C

With a **1800mAh** battery: $(1800\text{mAh}/1000) \times 0.8 / 20\text{A} \times 60 = 4.32$ minutes

With a **2200mAh** battery: $(2200\text{mAh}/1000) \times 0.8 / 20\text{A} \times 60 = 5.28$ minutes

With a **4000mAh** battery: $(4000\text{mAh}/1000) \times 0.8 / 20\text{A} \times 60 = 9.6$ minutes

Testing It Out

To make sure that your estimations are accurate, you'll want to make a few test flights. Following a landing, after the estimated flight time has expired, you can check to see if your battery has 20% left in the tank. If it's slightly off, you can alter your estimation for that battery and aircraft. All that's left to do is fly to the max!

[Back to Menu](#)

For Sale-



I still have this complete simulator for sale. I've owned several versions of the RealFlight simulator, and recently upgraded to version 9.5. I'm offering the G 3.5 simulator, with the Expansion Pack, Add-Ons 1 thru 5, and the Futaba USB controller for \$75.

I have had this version installed on several Windows desk tops and laptops, running Windows 7 thru 10. If interested, drop me an email at: newsletter@flyjcrc.com



Let me know if you have something to sell.

If interested, drop me an email at: newsletter@flyjcrc.com

Let me know if you have something to sell.

[Back to Menu](#)

Upcoming Events- 2022

The members voted to make the 18 August Natl. Model Aviation Day event the Club Pic nic and restrict it to members, their families and invited guests only. We still need an event manager to volunteer for the Halloween event and Glenn is working on confirming the event manager for the Learn to Fly event.

. Please consider volunteering to be the Event Manager for one of the open events. The Event Manager is the key to a fun and successful event.

Volunteer at either the next meeting or send an email to events@flyjrc.com.

JCRC 2022 Event Schedule

Event	Date	Event Manager	Location	Status
	<i>Club Sponsored</i>			
First Fly	1 Jan 2022	Skip Weller	Air Field	Completed
Indoor First Fly - Open to the Public	12 Feb 2022, Noon till 4 PM	Tim Edwards	KPT Auditorium	Completed
Indoor Second Fly - Open to the Public	12 Mar 2022, Noon till 4 PM	Tim Edwards	KPT Auditorium	
Spring Fun Fly and Swap Meet - Open to the Public	14 May 2022, 9 AM till 4 PM	Johnny Judd	Air Field	
Learn To Fly with JCRC - Open to the Public	30 July 2022, 10 AM till 4 PM		Air Field	
National Model Aviation Day and Club Pic Nic – Members and invited Guests Only Event	13 August 2022, 9 AM till 4 PM	Anthony Hall	Air Field	
Halloween Fun Fly - Open to the Public	29 October 2022, 10 AM till 4 PM		Air Field	
	<i>Non Club Event, Club Hosted</i>			
Third Annual East Tennessee SPA Competition – Public Spectators Welcome	September 10 & 11, 9 AM till 4 PM, Saturday & 9 AM till 1 PM on Sunday	Jerry Black and Vic Koenig	Airfield	

[Back to Menu](#)

Upcoming Activities at a Glance-

Fly Inside

**12 Noon till 4 PM, 12 March
2022 at Kingsport Civic
Auditorium**

Spring Work Day

**23 April 2022, TBD
At the Airfield**

Spring Fun Fly and Swap Meet

**14 May 2022, 9 AM till 4 PM
At the Airfield**

Learn To Fly with JCRC

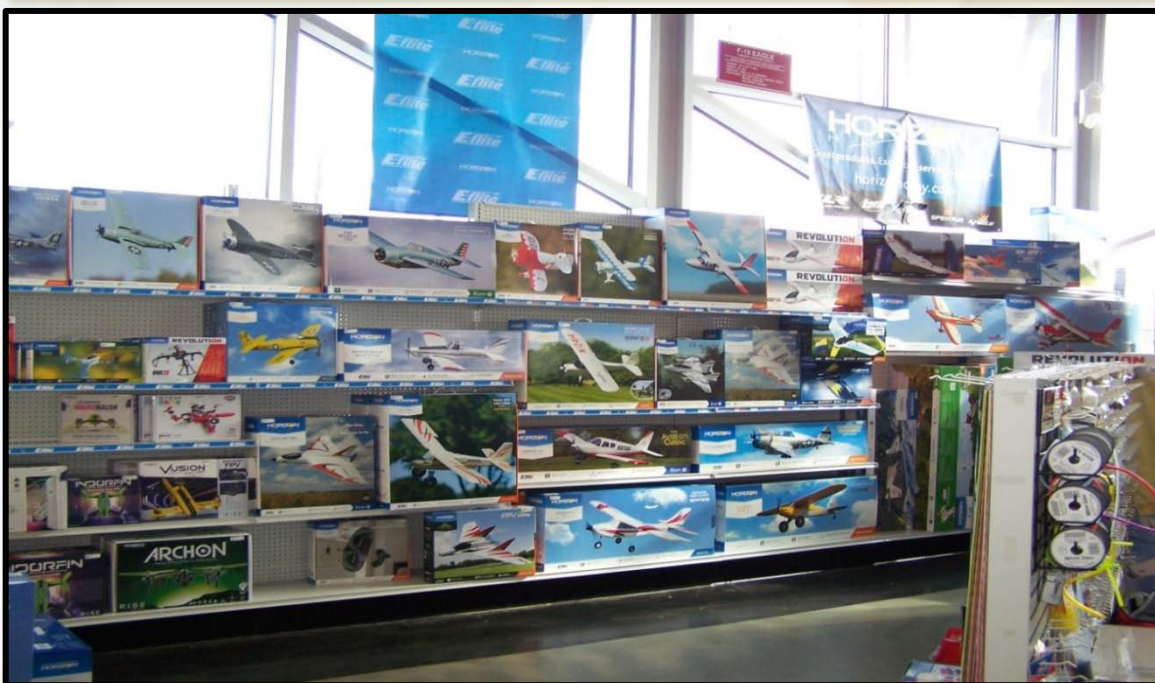
**30 July 2022, 10 AM till 4 PM
At the Airfield**

[Back to Menu](#)

Sponsors-

Hobby Town USA

Located at 3515 Bristol Highway in Johnson City, Hobby Town offers a full range of hobby needs, from model rail roading, to automotive modeling and aviation modeling. A strong sponsor of JCRC, they offer JCRC club members a 10% discount. Phone: (423) 610-1010.



[Back to Menu](#)

Appendix E to JCRC Corporate By-Laws, Proper use and care of Club.

JCRC will, over time, accrue various physical and other assets and resources that are used to support the club's day to day operation and further its goals and objectives. These include, but are not limited to, real assets such as flying benches, bleachers, metal buildings, storage sheds, cooking grills and implements, refrigerators, microwaves and coffee makers, sun shelters, chairs and tables, tools, signage, personal computers and computer servers, etc. This also includes operational resources such as the club Web site, the club Face Book page, other club social media accounts, the club's operational documentation, membership lists and contact lists.

All club resources are acquired or created to further the ability of the club to meet and further its stated goals and objectives of educational and recreational use of model aircraft and JCRC's goal to bring new people into the hobby of building, learning, and training new members to fly model aircraft and providing an opportunity to enjoy the hobby of aeronautical modeling and fellowship with other modelers. In almost every case, club resources are under the control or management of a specific Club Officer or an individual member who is responsible for a particular club function. For example, the club membership list is the responsibility of the Secretary and its provision to the members is the responsibility of the Web Master. The Grill, refrigerator and other food service resources belonging to the club are under the control of the member who runs our Chill and Grill program. All of the club's resources are for the use and benefit of the members and for meeting our aviation based goals and the club's business. That said, members must exercise certain responsibilities when using club resources. These include the following:

- Physical resources should be treated with care, ensuring they are cleaned after use and properly stowed. This covers such items as chairs, landscaping tools, flight and work tables, pop up shelters, work benches and tools.
- Physical items must be secured after use.
- Members should report any damages or issues they find with any of the club's resources to a club Officer (this can be by e-mail).
- Club resources are not to be removed from the field without specific permission of the Club President.
- Operational resources such as club documents, the club's tax exempt status, the club membership rolls, etc. are not for personal use and ONLY for club business use. This particularly pertains to the club web site, Face Book page and mailing lists.
- The club agrees in its flying site lease with Johnson City that:

"JCRC hereby certifies that they do not and will not practice any unlawful discrimination against any person or group on the basis of race, color, sex, religious creed, ancestry, or national origin.

The JCRC will comply with Title VI of the Civil Rights Act of 1964."

Therefore, Club resources specifically shall not be used to propagate or communicate specific religious or political positions with the exception of allowance for the playing of the Star Spangled Banner, our national anthem, at club events.

[Back to Menu](#)